

# PLAT OF SURVEY

A PART OF SECTION 1, T-20-N, R-8-E, PAWNEE COUNTY, OKLAHOMA

PREPARED FOR:  
OUR GANG PROPERTIES, LLC

## LEGAL DESCRIPTION

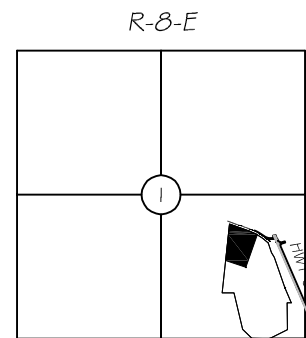
A tract of land located in the SE/4 of Section One (1), Township Twenty (20) North, Range Eight (8) East of the Indian Base and Meridian, Pawnee County, Oklahoma more particularly described as follows:

Commencing at the SE corner of said Section 1; thence N 89° 34' 44" W on a true bearing based on the U.S. Corps of Engineers survey a distance of 654.76 ft. to the point of beginning, thence N 63° 39' 36" E along the Corps of Engineers boundary line a distance of 365.41 ft. to a Corps of Engineers brass cap; thence N 00° 12' 02" W a distance of 493.70 ft to a Corps of Engineers brass cap; thence S 89° 35' 59" E along the Corps of Engineers boundary a distance of 74.23 ft. to the Southwesterly right-of-way line of U.S. Highway 64; thence N 22° 58' 17" W along said right of way a distance of 299.84 ft.; thence N 19° 13' 04" W along said right of way a distance of 590.0 ft.; thence N 30° 31' 40" W along said right of way a distance of 101.98 ft.; thence N 19° 13' 04" W along said right of way a distance of 185.38 ft. to a point on the Southwesterly right of way of the old Highway 64; thence N 44° 46' 48" W a distance of 0.0 ft. to a point of curve having a radius of 915.33 ft. and a central angle of 25° 48' 46"; thence along said curve to the left a distance of 412.37 ft. to the point of tangent; thence N 70° 35' 34" W along the said right of way of old Highway 64 a distance of 385.04 ft.; thence S 06° 07' 46" W a distance of 1266.38 ft.; thence S 89° 37' 51" E along the Corps of Engineers boundary line a distance of 218.78 ft. to a Corps of Engineers brass cap; thence S 13° 17' 26" E along the Corps of Engineers boundary line a distance of 685.88 ft.; thence S 45° 44' 10" E along the Corps of Engineers boundary line a distance of 239.96 ft. to a Corps of Engineers brass cap on the South line of said Section 1; thence S 89° 34' 44" E along said South line a distance of 319.74 ft. to the point of beginning, containing 40.0 acres more or less, and subject to all easements and rights-of-way of record,

**SURVEYORS NOTE:**  
ALL PINS AND BRASS CAPS REFERENCED ON THIS PLAT AS FOUND WERE EITHER SET OR REFERENCED TO ON A PLAT OF SURVEY BY HOWARD CONSULTING DATED 5/15/07 CHARLES HOWARD PLS 297

0 200 400 Feet

SCALE: 1"=200'



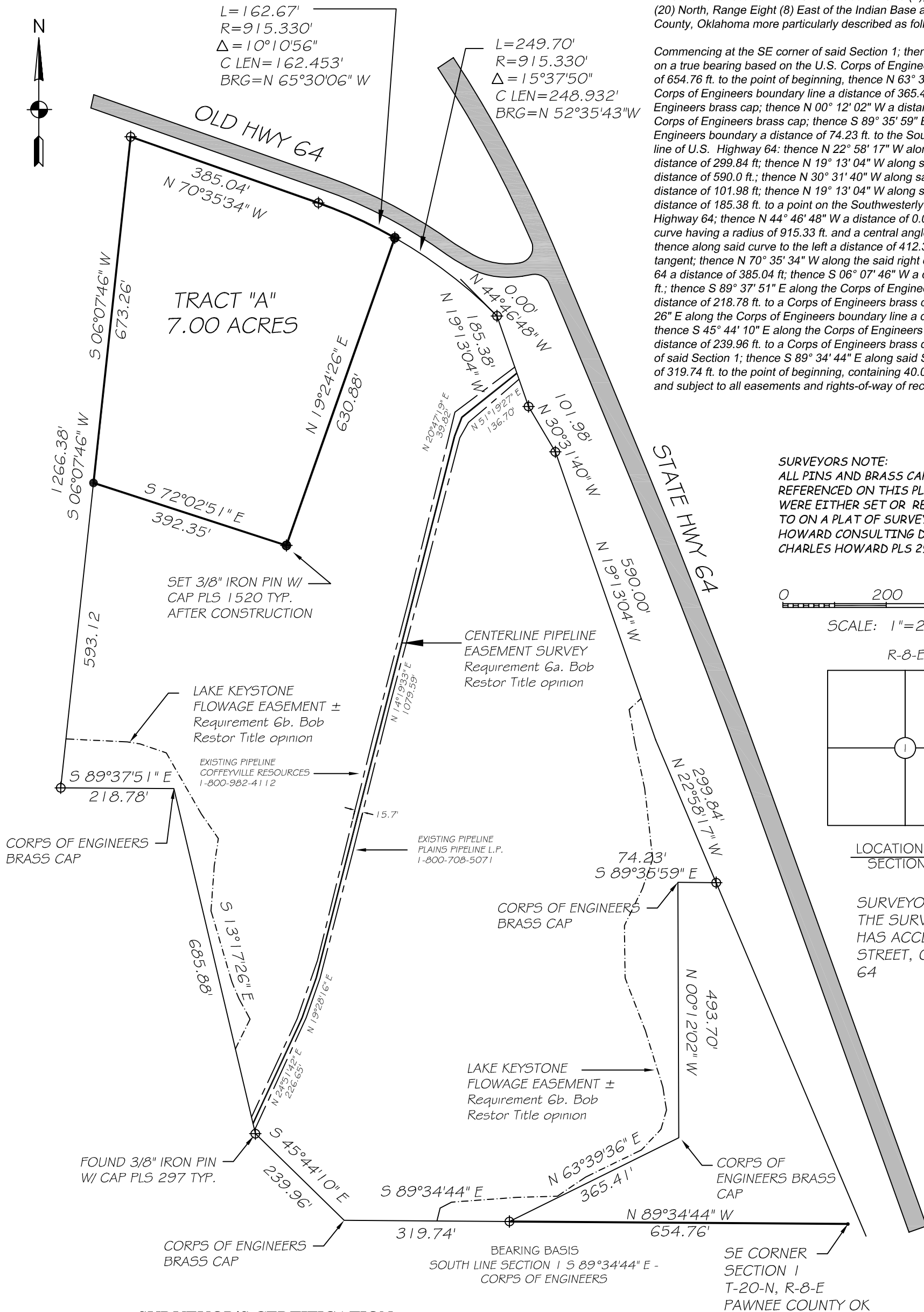
LOCATION MAP SECTION 1

**SURVEYORS NOTE:**  
THE SURVEYED PROPERTY HAS ACCESS TO A PUBLIC STREET, OLD STATE HWY 64

L=162.67'  
R=915.330'  
Δ=10°10'56"  
C LEN=162.453'  
BRG=N 65°30'06" W

L=249.70'  
R=915.330'  
Δ=15°37'50"  
C LEN=248.932'  
BRG=N 52°35'43" W

TRACT "A"  
7.00 ACRES

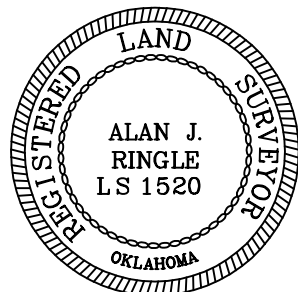


## SURVEYOR'S CERTIFICATION

I, Alan J. Ringle, certify that the attached legal description closes in accord with existing records, is a true representation of the parcel as described and meets the minimum technical standards for land surveying of the State of Oklahoma.

DATE:

ALAN J. RINGLE  
OKLAHOMA P.L.S. NO. 1520  
STATE OF OKLAHOMA CERTIFICATION OF  
AUTHORIZATION NO. CA 4164  
EXPIRATION DATE 06/30/2017



## SURVEYOR

RINGLE PLANNING & SURVEYING INC.  
5615 NORTH HIGHWAY 97  
SAND SPRINGS, OK. 74063  
PH (918) 637-2452  
CA # 4164 (EXPIRES 06-30-17)

JULY 20, 2015  
SHEET 1 OF 1