

FINAL PLAT OF
**HIGHLANDS AT THE
PRESERVATION DISTRICT**

AN ADDITION TO OSAGE COUNTY IN THE SE/4 OF SECTION 14,
TOWNSHIP 20 NORTH, RANGE 11 EAST, OSAGE COUNTY, OKLAHOMA

OWNER
THE PRESERVATION DISTRICT L.L.C.
2217 EAST SKELLY DRIVE
TULSA, OKLAHOMA 74105
PH (918) 749-1637

SURVEYOR
RINGLE PLANNING & SURVEYING INC.
5801 NORTH HIGHWAY 97
SAND SPRINGS, OK. 74063
PH (918) 245-5795
CA # 4164 (EXPIRES 07-12-04)

27 LOTS
1 RESERVE
1 BLOCK
46.47 ACRES

ACCEPTANCE OF DEDICATION BY BOARD OF COMMISSIONERS

BE IT RESOLVED BY THE BOARD OF COMMISSIONERS OF OSAGE COUNTY, OKLAHOMA, THAT THE DEDICATIONS SHOWN ON THE ATTACHED PLAT OF "HIGHLANDS AT THE PRESERVATION DISTRICT" ARE HEREBY ACCEPTED.

ADOPTED BY THE BOARD OF COMMISSIONERS OF OSAGE COUNTY, OKLAHOMA, THIS 26TH DAY OF JANUARY 2004.

APPROVED BY THE CHAIRMAN OF THE BOARD OF COMMISSIONERS AND THE BOARD OF COMMISSIONERS OF OSAGE COUNTY, OKLAHOMA, THIS 26TH DAY OF JANUARY, 2004

CHAIRMAN _____

ATTEST:
COUNTY CLERK, OSAGE COUNTY, OKLAHOMA

PLANNING COMMISSION APPROVAL

I, HOWARD M. PATTISON, DIRECTOR OF THE PAWNIUSKA-OSAGE COUNTY METROPOLITAN AREA PLANNING COMMISSION, HEREBY CERTIFY THAT THE SAID COMMISSION DULY APPROVED THE ANNEXED MAP OF "HIGHLANDS AT THE PRESERVATION DISTRICT" ON THE 14TH DAY OF OCTOBER, 2003.

DIRECTOR _____

COUNTY TREASURER'S CERTIFICATE

I, JOYCE HATHCOAT, DO HEREBY CERTIFY THAT I AM THE DULY ELECTED, QUALIFIED, AND ACTING COUNTY TREASURER OF OSAGE COUNTY, STATE OF OKLAHOMA; THAT THE TAX RECORDS ANNEXED PLAT OF "HIGHLANDS AT THE PRESERVATION DISTRICT" IN OSAGE COUNTY, OKLAHOMA; THAT THE REQUIRED STATUTORY SECURITY HAS BEEN DEPOSITED IN THE OFFICE OF THE COUNTY TREASURER.

IN WITNESS WHEREOF, SAID COUNTY TREASURER HAS CAUSED THE INSTRUMENT TO BE EXECUTED AT PAWNIUSKA, OKLAHOMA, ON THIS 26TH DAY OF JANUARY, 2004.

COUNTY TREASURER _____

FINAL PLAT OF
HIGHLANDS AT THE PRESERVATION DISTRICT
JANUARY 23, 2004 SHEET 1 OF 2

N
NW CORNER SE/4
SECTION 14
T-20-N, R-11-E
OSAGE COUNTY, OK.
FOUND 1" IRON PIN

OKLAHOMA DEPARTMENT OF ENVIRONMENTAL QUALITY APPROVAL

"I CERTIFY THAT I HAVE APPROVED THE APPLICATION AND PLAN FOR A PLAT OF A RESIDENTIAL DEVELOPMENT WHICH IS ON FILE AT THE TULSA OFFICE OF THE DEPARTMENT OF ENVIRONMENTAL QUALITY, AND HEREBY APPROVE THIS PLAT FOR THE USE OF PUBLIC WATER SYSTEMS AND PRIVATE SEWAGE SYSTEMS."

NOTE: ONCE PLAT APPROVAL HAS BEEN OBTAINED FROM THE DEPARTMENT OF ENVIRONMENTAL QUALITY, NO MAJOR SOIL MODIFICATION MAY OCCUR IN AN AREA DESIGNATED FOR SEPTIC SYSTEM DISPOSAL.

RESTRICTIONS TO APPROVAL: AEROBIC SYSTEMS ONLY

DATE: _____ SIGNED: _____
DEPARTMENT OF ENVIRONMENTAL QUALITY

BASIS OF BEARINGS
THE BEARINGS AS SHOWN ARE BASED ON THE WEST LINE OF THE HIGHLANDS = S 3°18'12" E

MONUMENTATION
3/8" IRON PIN W/CAP (PLS 1520)
SET AT ALL LOT CORNERS
AFTER CONSTRUCTION

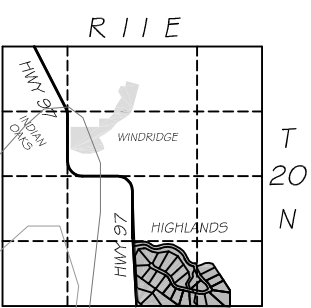
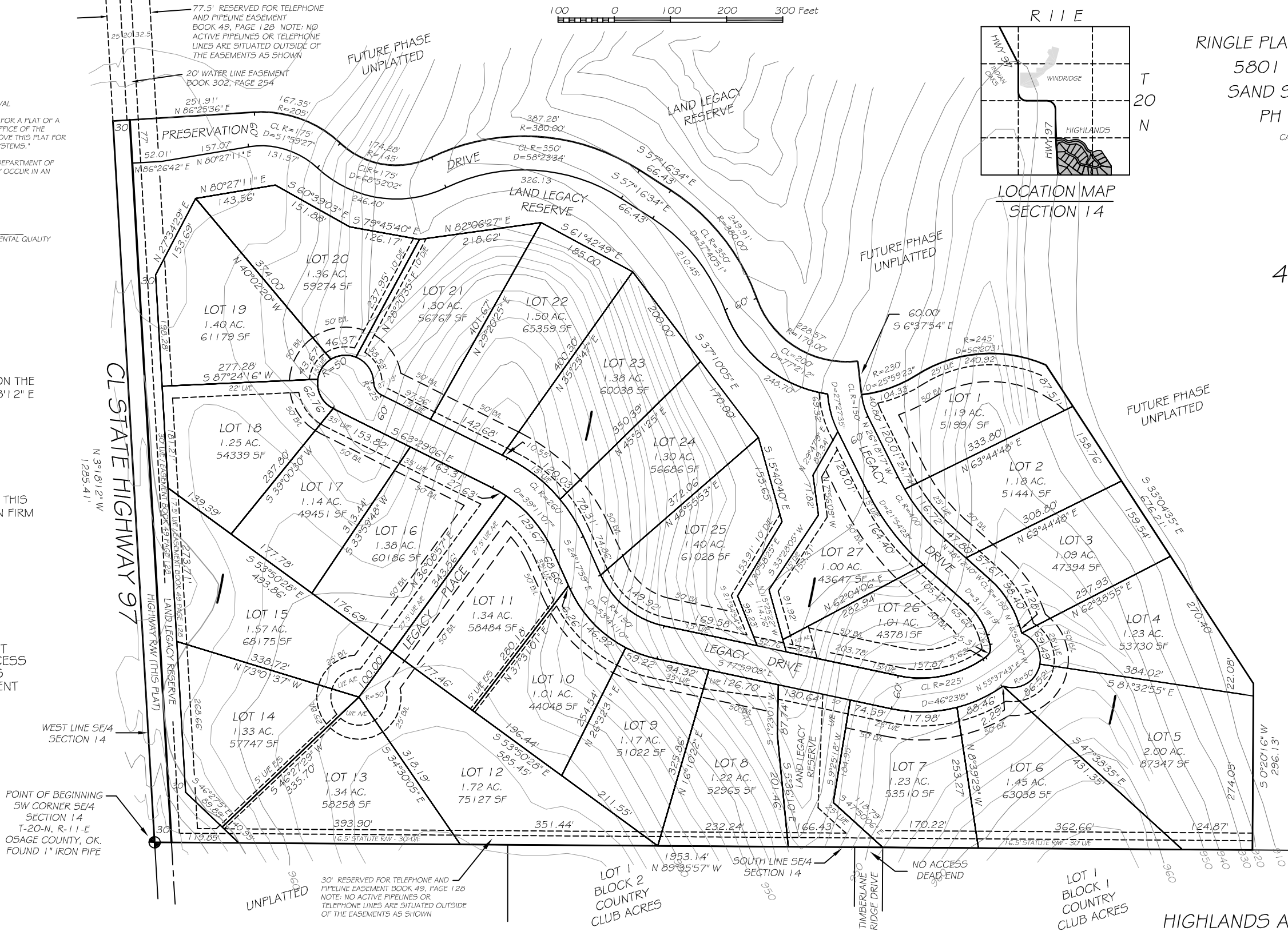
FLOOD INFORMATION
NO FLOOD HAZARDS ARE LOCATED ON THIS PROPERTY (ZONE X) AS ILLUSTRATED ON FIRM PANEL 400146 0660 C DATED 12-15-1994

PLAT LEGEND

U/E = UTILITY EASEMENT
B/L = BUILDING LINE
A/E = ACCESS EASEMENT
L.N.A. = LIMITS OF NO ACCESS
ACCESS = LIMITS OF ACCESS
D/E = DRAINAGE EASEMENT
R/W = RIGHT-OF-WAY
E/S = EACH SIDE

LIMITS OF NO ACCESS:
NO LOTS IN THIS ADDITION SHALL BE PERMITTED TO HAVE DIRECT ACCESS ONTO STATE HIGHWAY 97 OR ONTO PRESERVATION DRIVE.

THIS MAP OR PLAT MEETS OR EXCEEDS THE OKLAHOMA MINIMUM TECHNICAL STANDARDS FOR THE PRACTICE OF LAND SURVEYING



LOCATION MAP
SECTION 14

30" RESERVED FOR TELEPHONE AND PIPELINE EASEMENT BOOK 49, PAGE 128 NOTE: NO ACTIVE PIPELINES OR TELEPHONE LINES ARE SITUATED OUTSIDE OF THE EASEMENTS AS SHOWN

POINT OF BEGINNING
SW CORNER SE/4
SECTION 14
T-20-N, R-11-E
OSAGE COUNTY, OK.
FOUND 1" IRON PIPE

SE CORNER SE/4
SECTION 14
T-20-N, R-11-E
OSAGE COUNTY, OK.
FOUND BRASS CAP