

# Windridge

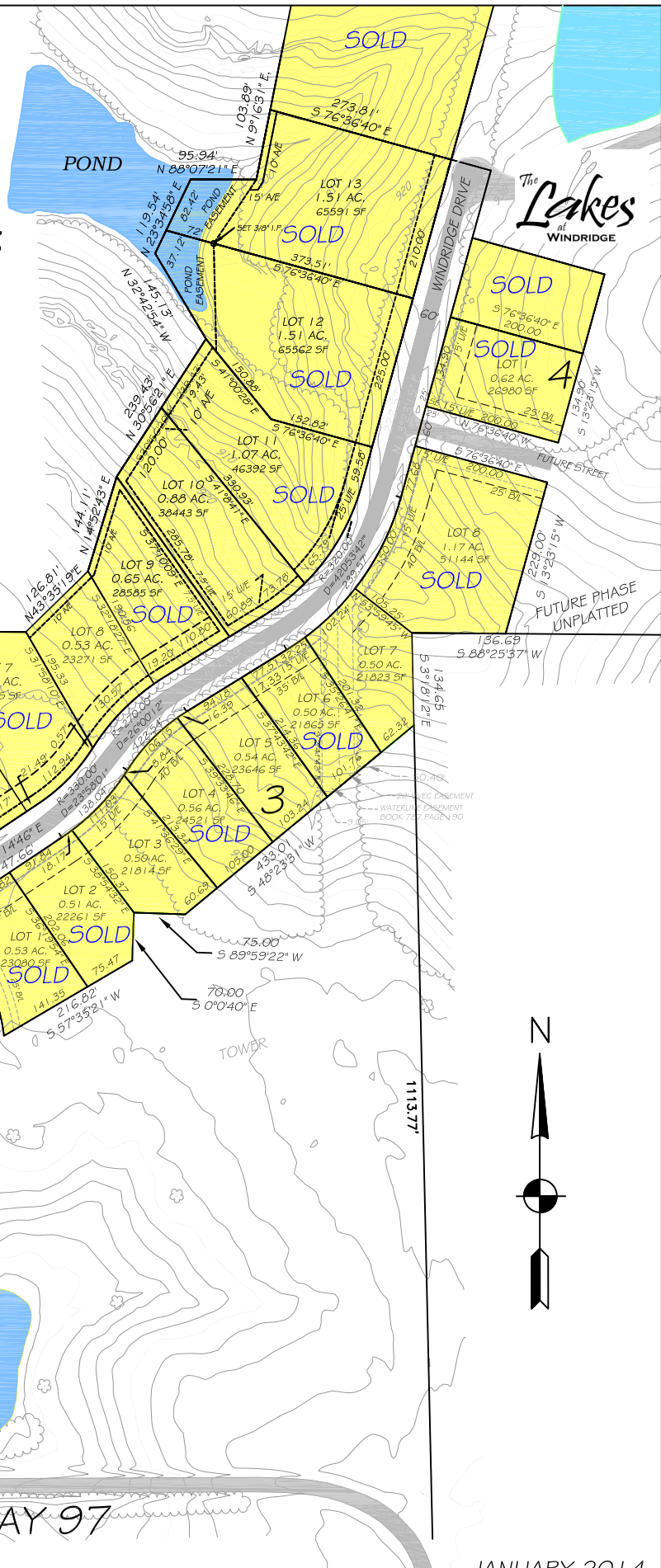
## Ringle Development



20 YEARS  
DEVELOPING  
WITH  
NATURE

ringledevelopment.com

0 100 200 400



The  
**Lakes**  
of  
WINDRIDGE

STATE HIGHWAY 97

STATE HIGHWAY 97



CALL 918-637-2452 FOR MORE INFORMATION

THIS IS A SALES PLAT ONLY, PLEASE CALL FOR A PLAT AND RESTRICTIONS, PRICES SUBJECT TO CHANGE

JANUARY 2014

**the cliffs**  
at the preservation district