

St. Hwy 97

N. McKinley Ave.

# Call 918-637-2452 or a private tour

## NORTHBRIDGE SKYLINE II

for More Information

Oak Ridge Drive

**ENTRANCE**

PROPERTY ADDRESS FOR GPS:  
801 OAKRIDGE DRIVE, SAND SPRINGS, OK 74063



**SPECTACULAR DOWNTOWN TULSA & VALLEY VIEWS, GATED PAVED DRIVE - "TULSA VIEW", OSAGE COUNTY - OUTSIDE OF CITY LIMITS, NEXT TO 100 ACRE CONSERVATION EASEMENT**

**UTILITIES:**

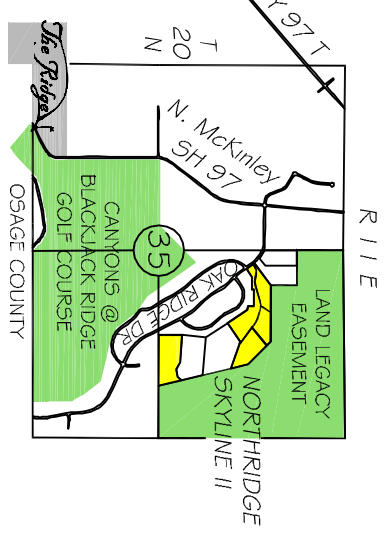
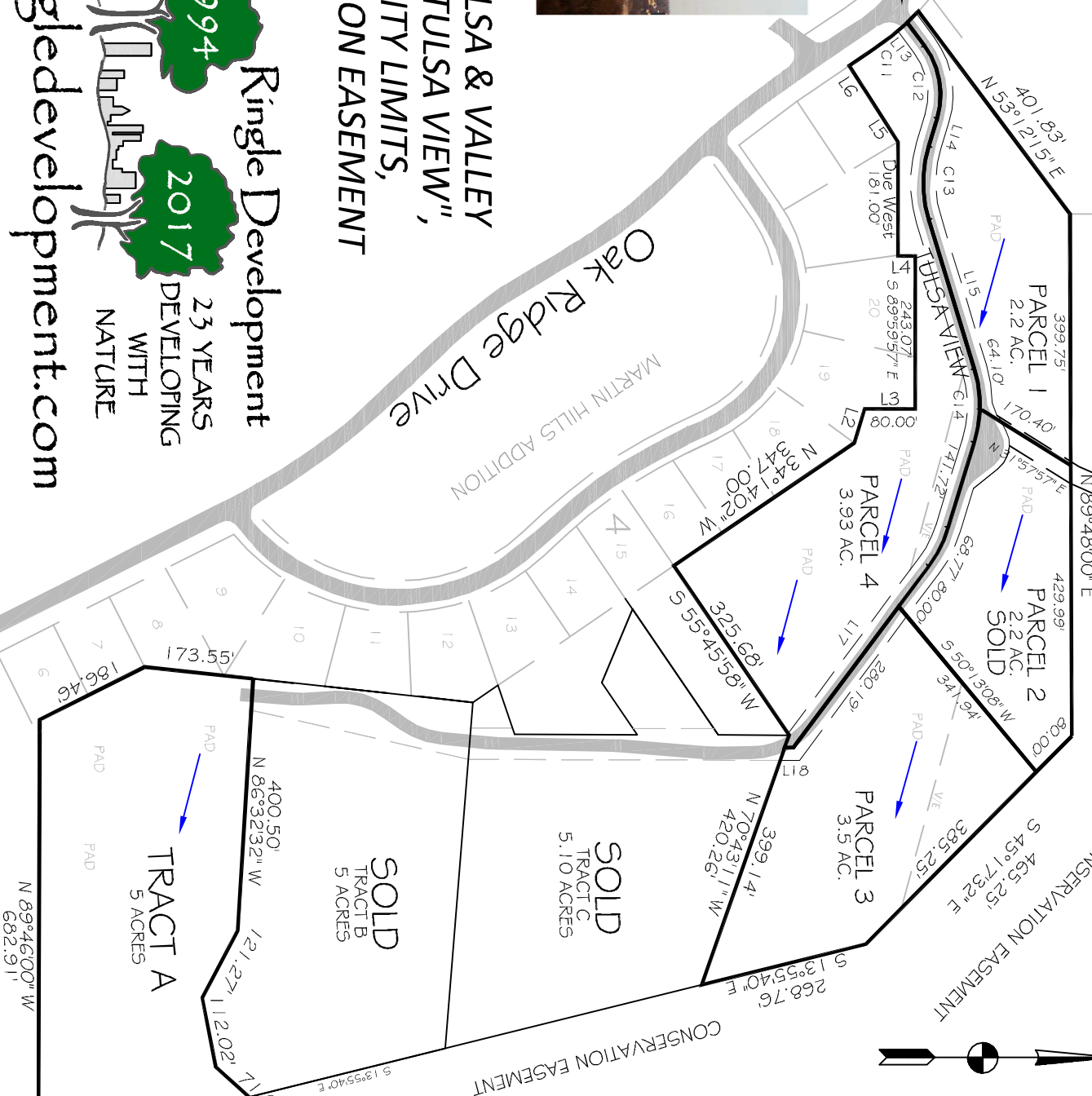
- WATER - SAND SPRINGS
- POWER - PSO AEP
- GAS - ONE GAS / ONG
- CABLE - COX - ATT
- SEWER - AEROBIC
- SHERIFF / SAND SPRINGS
- SAND SPRINGS

**SCHOOLS:**

SAND SPRINGS

PAD = POSSIBLE HOME SITE - CONSTRUCTED BY BUYER  
VE = VIEW EASEMENT  
AE = ACCESS EASEMENT

**Ringle Development**  
1994  
23 YEARS DEVELOPING WITH NATURE  
2017  
[ringledevelopment.com](http://ringledevelopment.com)



**VIEW OF TULSA**

**PRICES**

PARCEL	ACRES	PRICE
1	2.2	\$95,000
2	2.2	SOLD
3	3.5	\$110,000
4	3.93	\$160,000
A	5.0	\$165,000

**CALL 918-637-2452**

for more information

THIS IS A SALES PLAT ONLY PLEASE CONSULT THE FINAL SURVEYS, COVENANTS & RESTRICTIONS FOR "NORTHBRIDGE SKYLINE II"  
7-4-2017 PRICES SUBJECT TO CHANGE